

2021 – 2022 Reopening and Safety Plan



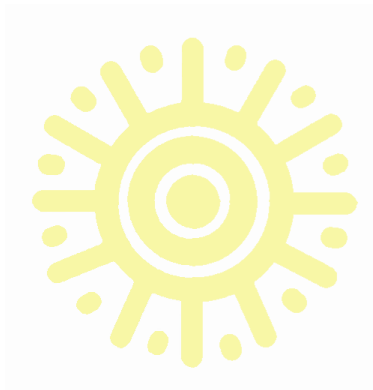
El Sol Science & Arts Academy
An Excellent Public School

TABLE OF CONTENTS

INTRODUCTION.....	3
ORGANIZATION.....	4
HEALTH & SAFETY PROTOCOLS.....	5
SCREENING & MITIGATION.....	7
FACILITY CLEANING & SANITATION PROTOCOLS.....	10
INSTRUCTIONAL PROGRAMS.....	14
OTHER CONSIDERATIONS.....	14
REDUCING THE EQUITY GAP.....	15

APPENDIX

APPENDIX I - COVID-19 FAQ.....	19
APPENDIX II - COVID-19 STUDENT SCENARIO CHART.....	21
APPENDIX III - COVID-19 STAFF SCENARIO CHART.....	23
APPENDIX IV - SYMPTOMS OF CORONAVIRUS.....	25
APPENDIX V - RESOURCES.....	26
APPENDIX VI - HOW TO SELECT A MASK.....	27



Please note this document is subject to change in accordance with the state guidelines.

INTRODUCTION

The El Sol Covid-19 plan's objective is to significantly reduce opportunities for the transmission of the virus among the entire El Sol family—teachers, staff, parents, and students as well as the contiguous community.

Educational and Health Commitments: Evolution and Content of Plan

El Sol's educational commitments for the 2021-2022 school year are to provide each of its students with a quality educational program and set of learning experiences and, to do so, while attentive and committed to the health and wellbeing of its diverse students and their families. Indeed, as it has from its early beginnings, the school acknowledges that a healthy El Sol family is essential to the educational progress of the family's children.

As a consequence of frequently changing guidelines from relevant federal, state, county, local health, and educational agencies, as well as national medical professional groups, resulting from increasing knowledge about the COVID-19, questions and issues exist that El Sol is attentive to and trying to resolve concerning the best COVID 19 assessment, screening, and mitigation strategies. Similarly, questions remain among El Sol's leaders, staff, and teachers as to the best hybrid educational approach and the related staging of curriculum modules and classes.

El Sol knows that it is not alone in asking questions or facing issues. El Sol is fortunate to be part of a UCI research program concerning the efficacy of testing and mitigation strategies. Knowledge sharing related to COVID-19 experiences and a continuous willingness to evaluate its response as well as refine and amend its plan during this next educational year, will provide El Sol a ladder to continued educational success and a healthy campus.



ORGANIZATION

Advisory Committee

El Sol will set up a small Advisory Committee. It will include at least: two physicians and one nurse with experience relevant to the COVID-19 virus; one recognized OC leader with a background in working with health and education-related public agencies, a teacher, and a parent from El Sol. It will meet once a month on zoom and, if conditions permit, once every other month on site. Its role will be to monitor and discuss El Sol's progress in meeting COVID-19 Plan commitments, provide advice to strengthen El Sol's essential linkages with relevant federal, state, county and local government agencies concerning diverse strategic mitigation strategies and review and provide advice to assure an effective and efficient match between El Sol's continuous COVID-19 mitigation commitments and available resources. Special meetings will be called if there are unanticipated COVID-19 emergencies. Individual members of the Committee will advise as to questions that might arise over phone or on email and zoom, depending on their schedule based on their specific backgrounds.

Coordination

El Sol's executive director will identify and select three senior staff individuals to provide coordination of the school's educational and health safety initiatives during 2021 and 2022, they will report directly to the executive director. They will assume responsibility for the successful implementation of and compliance with the plan. They will be the "go to" individuals concerning resolution of education, as well as related COVID-19 health and wellbeing problems. They will work with staff and teachers in a collaborative manner. They will be the point of contact for student and family questions about COVID-19. The executive director shall be the primary point of contact with involved agencies, foundations, UCI Task force and media.

NAME	RESPONSIBILITIES	CONTACT
Jenny Zavala	Instructional Program	Email: jzavala@elsolacademy.org Phone: (714) 397-5380
Sara Flores	Health and Safety	Email: sflores@elsolacademy.org Phone: (714) 975-0544
Tristan Gude	Operations	Email: tgude@elsolacademy.org Phone: (714) 767-6078

HEALTH AND SAFETY PROTOCOLS

Masks and Spatial Distance

The students and staff will be required to wear a mask indoors and outdoors. CDPH will continue to assess conditions on an ongoing basis, and will determine no later than November 1, 2021, whether to update mask requirements or recommendations.



Recent evidence indicates that in-person instruction can occur safely without minimum physical distancing requirements when other mitigation strategies (e.g., masking) are implemented. This is consistent with [CDC K-12 School Guidance](#).

AGE / GRADE	FACE COVERING REQUIRED INDOORS AND OUTDOORS
Under 2 years old	No
Age 2 – 2 nd Grade	Yes, Required
3 rd Grade – 8 th Grade	Yes, Required

Exemptions to Mask Requirements

- Students and staff members exempted from wearing a face mask due to a medical condition must provide a note from their medical doctor.
- Persons with a medical condition, mental health condition, or disability that prevents wearing a mask. This includes persons with a medical condition for whom wearing a mask could obstruct breathing or who are unconscious, incapacitated, or otherwise unable to remove a mask without assistance.
- Persons who are hearing impaired, or communicating with a person who is hearing impaired, where the ability to see the mouth is essential for communication.
- Persons for whom wearing a mask would create a risk to the person related to their work, as determined by local, state, or federal regulators or workplace safety guidelines.

Classroom Space

Classrooms will be configured to maximize physical distance between students. Based on updated guidelines from public health officials, El Sol teachers can interact with multiple instructional stable groups/cohorts. Students can rotate classrooms, or teachers can rotate classrooms to support multiple cohorts. Teachers can request Plexiglas clear desk shields to be placed on students desks, if they choose.

Equipment

To the extent reasonable considering educational and cost objectives, control of technical equipment in the classroom will rest with teachers from their positions in front of class. Students in kindergarten to grade eight will have laptops, with age graded apps, and connected to internet and, if resources permit, access to virtual reality devices to extend their sensitivity and understanding of their environment, the world, the community and its people-now limited by pandemic. Interactive white Boards will be in front of the room.



Outdoor and Recreation Space

El Sol will maximize use of designated recreation and outdoor spaces for scheduled outdoor classrooms, breakfasts, lunches, recess, and physical education.

PE and Exercise

During recess/outdoors, while no physical distancing is required, masks will be required by all staff and students. If masks are removed (e.g. eating/drinking, speech therapy, or music class) schools will utilize outdoor space or maximize physical distance for any activities where students cannot wear a mask.

Public health officials have revised their K-12 guidance to reflect clear evidence that COVID-19 is primarily transmitted via aerosols and respiratory droplets and not via surfaces. As a result, El Sol students can share most supplies and materials within their instructional group/cohort. All classrooms and instructional materials will be cleaned each evening.

Health & Hygiene Practices

We will continue to encourage hand washing thoroughly throughout the day and the use of touch-less hand sanitizer (dispensers in all classrooms & throughout buildings), when hand washing is not available.

Directional

El Sol will develop and use an effective and efficient directional system. It will include simple to understand painted or taped signs and or symbols on walls, floors, and sidewalks to indicate location of classrooms, offices, bathrooms as well as the need to wear masks.

El Sol will continue to designate paths of travel (ideally one-way) in order to avoid congregation, congestion, and intermingling of different instructional stable groups/cohorts.

Food Support and Providing Breakfast and Lunch

Governor Gavin Newsom launched the Universal School Meals Program, that means ALL students qualify for FREE school meals. Lunch mealtimes will be staggered to meet efficiency objectives re delivery and to assure fresh food, avoid delays in service and provide healthy environments for eating. Students will eat outside in designated spaces (except during inclement weather conditions). Outdoor lunches will be monitored by teachers and or staff.

The Mercado located contiguous to, but separate from El Sol's classroom campus, will continue to provide food to the community, including supplemental food to El Sol families. Families eligible for food will not enter the actual classroom campus.

SCREENING AND MITIGATION

Entering Campus

El Sol has begun and will continue to use a combination of technology and trained staff to screen persons-teachers, staff, and visitors before they enter the school site.

If El Sol students, teachers and staff reflect symptoms, the School will initiate mitigation procedures correlated generally with risk assessment procedures on the Decision Tree Chart on [page 21-23](#).

All El Sol approved vendors, contractors and visitors will be asked to use the UCLA screening device and the Decision Tree the evening before their appointment to secure an entry certificate. Assuming they receive one, immediately prior to their appointment they will undergo a temperature check at the entrance gate.



Individuals with temperatures under 100.4 will be allowed to go to their onsite appointment. El Sol will develop specific protocols for these groups and provide it to them simultaneous with reviewing their request for appointments on site. Their campus appointments will be premised on their acceptance of the protocols.

El Sol's use of the UCLA system, process, and app as well as the Screening and Mitigation Decision Tree on [page 21-23](#) will help reduce Covid-19 incidences and impact. In this context, El Sol, subsequent to initiating the hybrid model, will make best efforts to communicate and, if possible, to work with UCLA, and UCI Task Force to harmonize the now different algorithms and symptoms used by UCI and Symptom Screen and Mitigation Decision Tree to increase consistency concerning risk assessment criteria and facilitate record keeping as well as evaluation of teachers, staff, and visitors entering the campus.

At Home Health Screening

Students & Staff Members must self-monitor daily.

- Do not come to school if you have symptoms of COVID-19 or if you've had close contact with someone who has COVID-19 or has tested positive.
- If student has tested positive for COVID-19,
- Has been in close contact with someone who has tested positive for COVID-19,
- Or is experiencing symptoms of COVID-19, parent/guardian/caretaker must report it immediately to Sara Flores, Director of Community Life via phone 714-975-0544 or email sflores@elsolacademy.org

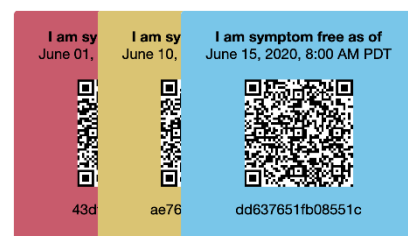
Testing of Staff/Testing of Students

Staff members and students with symptoms of COVID-19 infection will not return for in-person instruction until they have met CDPH criteria to discontinue home isolation for those with symptoms:

- At least 24 hours have passed since resolution of fever without the use of fever-reducing medications;



Computational Medicine



- and other symptoms have improved;
- and they have a negative test for SARS-CoV-2
- OR a healthcare provider has provided documentation that the symptoms are typical of their underlying chronic condition (e.g., allergies or asthma)
- OR a healthcare provider has confirmed an alternative named diagnosis (e.g., Streptococcal pharyngitis, Coxsackie virus),
- OR at least 10 days have passed since symptom onset

Decisions Concerning Further Student Screen, Testing, and Contact Tracing

Students who reflect symptoms **while on site** will be screened further by trained El Sol staff using the Decision Tree Chart [page 21-23](#). The process, as illustrated above, will identify low and high-risk symptoms and lead to identified school actions concerning school attendance and relevant mitigation strategies. All students and staff with high-risk symptoms will be reported to the Orange County Health Care Agency (OCHCA) for further assessment, testing, and contract tracing within 24 hours. El Sol staff will work with OCHCA to facilitate testing, contact tracing, and proper quarantining as well as treatment in and out of home. El Sol's designated Point of Contact is Sara Flores.

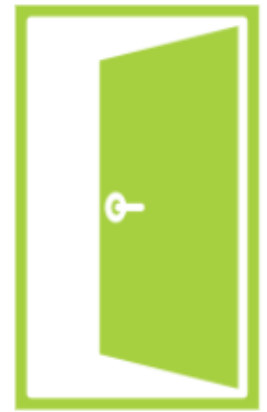
Testing for Covid-19

- Fully vaccinated close contacts should be referred for COVID-19 [testing](#). If asymptomatic, fully vaccinated close contacts do not need to quarantine at home following an exposure (they can continue to attend school in-person and participate in other activities). In addition to correctly wearing masks in school, they should wear a mask in other indoor public settings for 14 days or until they receive a negative test result.
- Close contacts who are not fully vaccinated should be referred for COVID-19 [testing](#). Regardless of test result, they should quarantine at home for 14 days after exposure. [Options to shorten quarantine](#) provide acceptable alternatives of a 10-day quarantine or a 7-day quarantine combined with testing and a negative test result.
- COVID-19 screening testing is another critical layer monitoring for Covid-19. Routine testing helps us reduce the risk of COVID-19 transmission by identifying and isolating potentially infected individuals as soon as possible.
- El Sol Academy will continue to offer optional weekly screening testing, free of charge, to both students and staff. Vaccinated individuals (showing no symptoms) or individuals who have recovered from COVID-19 within the past 3 months (showing no symptoms) do not need to participate in COVID-19 screening testing.
- Unvaccinated staff members will participate in weekly testing.

Assessment Room and Functions

El Sol will provide a safe, clean, staff supervised isolated waiting and Assessment Room. All students with symptoms of COVID-19 will be asked to immediately go to the Assessment Room by teachers or staff. While in the room, students and staff will be required to wear masks. Staff personnel will have access to and use masks or Plexiglas shields. The room will require social distancing.

No one will be allowed in or out of room without approval of the in-room trained staff persons. The room will have a built in or portable sink and closed cupboards for minimal medical supplies. It will be linked to the front office by El Sol's internal communication system and to the visiting El Sol nurse, teachers, staff, parents, family physician and OCHCA by phone and email or zoom. Staff working in the Assessment Room will have the ability to secure medical advisement (e.g., visiting nurses, family physician, etc.). The Assessment Room will have laptops available with desks and chairs for staff persons and chairs for students. Finally, murals, pictures, and or posters, will be used to make the room welcoming to students.



Students, teachers, and staff who require self-quarantine for specified amounts of time based on risk assessment by staff in the Assessment Room shall exit the campus. Students will be accompanied by a staff person. Parents, or caregivers, or persons pre- designated in writing by parents or caregivers as drivers, will pick up the students and bring them home for self-quarantine. Affected students will be able return to El Sol, when criteria outlined on the Decision Tree Chart on [page 21-23](#) are met and appropriate documentation is provided to El Sol.

Parents and COVID-19

Parents will not be allowed to enter the El Sol Campus. Staff will bring students in emergencies to the entrance gate allowing parents to pick up their children. Parent teacher meetings will be initiated on zoom.

Should COVID-19 symptoms, based on self-observations, occur in individuals residing in the students' home, the individuals will be advised to make best efforts to immediately see their personal physician. If they have no personal physician or ready access to a Santa Ana clinic because of income constraints, El Sol will facilitate an appointment at the SOS/El Sol Wellness Center (FQHC) located on the El Sol campus. Mitigation measures defined by assessment criteria, like those on the Decision Tree Chart, will be adhered to by everyone including the need for self-quarantine.

FACILITY CLEANING AND SANITATION

El Sol is committed to providing on-site teachers, staff, and students with a clean and safe environment; one that reduces significantly, the possibility as well as the probability of exposure to, contamination, transmission and spreading of COVID-19. To achieve success, El Sol will grant attention to different kinds of cleaning objectives and strategies including but not limited to the use of diverse cleaning schedules and approaches, special equipment, disinfectants/sanitizers. All El Sol cleaning strategies will be consistent with CDC, EPA, State of California and OCHCA guidelines.



Built in Sinks and Portable Sinks

All El Sol classrooms will have access to a sink for washing hands/proper hygiene. Each classroom will also have EPA approved hand sanitizers (60% ethyl alcohol based) easily accessible to room occupants. Similarly, the campus, external to classrooms, will reflect EPA approved hand sanitizers in visible accessible locations. All campus water fountains will be closed or converted into water flow stations

able to fill reusable student, staff, and teacher water bottles. Each group will be encouraged to use their own personal water bottles.

Washing Hands

Teachers, staff, and students will wash their hands or use El Sol's sanitizers for at least 20 seconds several times a day including when they arrive on site.

To avoid duplicative hand washing requirements, if there are no changes in classrooms and no breaks between classes or changes in staffing patterns, students, teachers, and staff will wash or sanitize their hands before their first class each day.

Washing hands will be required subsequently after PE activity, after recess, after bathroom use, before and after onsite breakfast and after lunch and before they leave school. If there are discontinuities in staffing patterns, each new class will require before and after hand washing or hand sanitizing. Sneezing and coughs will require instant handwashing or hand sanitizing. El Sol shall provide single use paper towels and separate externally identified receptacles for each. Trash and recyclables will be conveyed to pick up conveyers by custodians at the end of each day.

Cleaning Surfaces



Most surfaces in classrooms which are not used frequently and or if used by the same person will be cleaned at the end of every day; other surfaces that secure more intense use or are frequently touched will be cleaned at least two times day.

At end of every day: Chairs, desks, phones, headsets, computers including keyboards, handrails, light switches, public connection spaces (e.g., reception), classroom door handles, fax machines, kitchens and preparation spaces, door handles etc.



At least two times a day: Elevators, restrooms, doorknobs, toilets, and sinks, and water dispensers used to refill water bottles, classroom surfaces etc.

Tables used for lunch or breakfast shall be cleaned after scheduled lunch and breakfast periods. El Sol teachers and staff will continuously observe use of surfaces and modify, and where necessary based on use, amend the surfaces subject to and the timing associated with cleaning and disinfecting.

Sharing of Materials

Public health officials have revised their K-12 guidance to reflect clear evidence that COVID-19 is primarily transmitted via aerosols and respiratory droplets and not via surfaces. As a result, El Sol students can share most supplies and materials within their instructional stable group/cohort. Teachers are no longer required to disinfect shared supplies and materials between uses. Students can also share P.E. equipment within their instructional stable group/cohort.

Restroom Use

Student will use restrooms that are easily accessible and located either contiguous to hallways in each classroom building or located in clusters external to and near such buildings.

Students must wear masks and maximize physical distance during transitions and during restroom breaks.

All students in grades three to grades eight, will use nearest accessible restrooms on their own. Excessive time away from classroom, if repetitive, will be discussed with students to determine if a medical problem or behavioral problem exists. Either one, upon confirmation, will be responded to by El Sol staff within defined protocols.

Restroom Cleaning

All students, staff, teachers must wash their hands after use of restrooms. Restrooms will be cleaned by El Sol custodians at least two times a day - once in morning before school starts, and once at lunch. More cleaning time will be added, if staff accompanying young children observes such cleaning is essential to sustain COVID-19 free environment. Deep cleaning will be used to clean restrooms at least once a week. El Sol will maintain a computerized log and record of cleaning activities.

Cleaning Materials



El Sol will use OCHCA, CDC and EPA approved disinfectants, including sprays, concentrates and wipes, as appropriate, to the area or surface being cleaned. Frequently used surfaces in classrooms and outside of classrooms will be cleaned before first classes begin and subsequently at end of day. All unnecessary furniture will be removed from classes and stored by El Sol.

Playground equipment will be used by students this school year.

Deep Cleaning

Rooms where the COVID-19 virus has been transmitted will be closed for 24 hours and subsequently subject to deep and intensive cleaning before being used by students, teachers, staff, and approved visitors again. El Sol will use sanitizers and disinfectants as well as protective equipment approved by OCHCA, CDC and EPA. The School, depending on costs, will consider use of electrostatic sprayers, foggers, and misters to reach difficult to get places. It will follow expert advice to disinfect from clean areas to dirty areas, from high areas or surfaces to low area or surfaces. It will also remove any visible soil with detergent based cleaners before applying disinfectant. Custodial personnel undertaking deep cleaning will receive training and wear appropriate PPE protection such as gloves, protective glass, or face shields, cloth masks or respirators, etc.



El Sol has acquired disinfectant wipes, mask, gloves, and other supplies to meet short term cleaning and disinfection needs and personal protection requirements. The School, based on a frequently updated analysis of inventory of the same and its usage, will sustain an ample supply of cleaning, sanitizing, disinfecting materials on site in a safe place and under lock and key.

Ventilator and Air Flow

All but two classrooms are in new buildings at El Sol meaning that for all but two classrooms, HVAC systems are new. El Sol will inspect all ventilators before school opens to make sure that that all ventilators meet OCHCA and EPA standards related to COVID-19. El Sol will put in place filters that will permit HVAC to meet air quality standards. Generally, HVACs will be started one hour before classes begin.

1. El Sol will track and record maintenance activities to insure consistency with relevant OCHCA and EPA's air quality criteria.
2. El Sol will change filters consistent with maker's recommendations. El Sol will test air filtration to assure filtration meets relevant federal and county COVID-19 guidelines, including use of MERV 13 filters. The School will inspect dampers and ducts periodically to assure quality air flow.
3. El Sol will evaluate air flow and quality in each classroom at minimum bi-monthly to assure air quality criteria are met throughout the campus.

Vaccinations

While we recognize and honor personal preferences and needs, we strongly encourage all eligible El Sol team members, students, families, and caregivers to get vaccinated. El Sol partners with several health agencies and will provide referrals for vaccination upon request. Additionally, information regarding vaccination drives will be provided weekly through our newsletter.

INSTRUCTIONAL PROGRAMS

Background

We believe that an in-person educational experience is best for students as long as it is safe to do so. We are following all guidelines in order to continue to provide a safe environment to maximize the benefits of being in person. We know everyone worked really hard last year during our hybrid program and are excited to solely focus our efforts on an in-person approach. Moving forward, we will not offer distance learning as we did this past school year.

In the rare case that your student is unable to attend school in-person due to personal health complications, please contact Sara Flores via phone 714-975-0544 or email sflores@elsolacademy.org to discuss eligibility for an independent study program for your child. Our number one priority remains the safety of our students and team members in order to provide a joyful academic experience.

We look forward to strengthening our connections, trust and community for your children. I know we will continue to learn and grow together. We cannot wait to see you all in August!

OTHER CONSIDERATIONS

Special Education Student

El Sol will grant special attention and priority to the health, safety, and educational needs of special education students, their teachers and classroom staff. It will strategically balance classroom integration with special tailored learning experiences for special needs students. Similarly, to the extent possible, it will relate education and health priorities of special education students to choices concerning asynchronous and synchronous learning.



The school will provide relevant PPE and respond to the identified health needs of special needs students, including medically fragile or immune compromised students, concerning classroom location and scheduling, teaching/staffing patterns, health assessment, food service, and PE.

Transitioning to in person Instruction

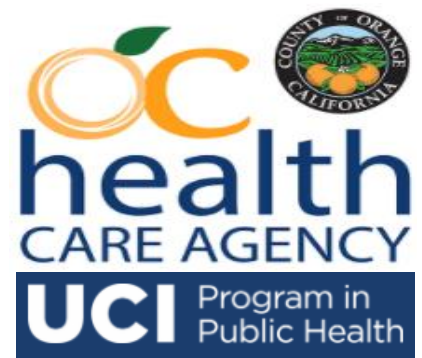
The School will periodically fine-tune its plan and guidelines because of increased understanding of the virus impact and related amended government guidelines. El Sol will communicate and discuss the plan and guidelines with parents, teachers, staff, and students. Further, El Sol will administer strategic intense short-term teacher and staff training initiatives on a monthly basis. The programs, apart from covering the plan details, will encompass recognizing and assessing participants COVID-19 symptoms. Additionally, the training will include proper screening techniques, modeling necessary hand washing, use of sinks, sanitizers and cleaners, the need to maintain social distance guidelines and continuously wear face masks, knowledge of testing requirements, means of identifying parents, teachers, staff, and students who have had or are now having close contact with a person with symptoms, etc. The school will maintain a record of the trainings, along with rosters.

REDUCING THE EQUITY GAP

Expand Testing

El Sol will collaborate with UCI to assure successful completion of its proposed research program. The School will work with UCI and OCHCA to convert testing and contact tracing requirements to reality.

However, once in person instruction is initiated successfully, El Sol, conduct a weekly testing program for El Sol's students and staff. El Sol will collaborate with OCHCA and the Valencia Labs to procure and process tests. The School will work closely with OCHCA to assure testing occurs and that record keeping is sustained concerning numbers and names of individuals tested, type of test, contact testing and test results.



Response to Flu

Experts project the possibility of increased numbers of flu illness during fall and winter. Parents as well as teachers, staff and students will be required to report flu or flu like symptoms to El Sol. All parents, students, staff, and teachers will be asked to take flu shots - except those individuals with medical exemptions.

The El Sol nurse working with trained El Sol staff will determine and track flu incidence at El Sol. Family physician reimbursed by publicly supported insurance will provide exam and treatment to uninsured El Sol families and their students. The on-site SOS office will continue to triage medical and wellness services to El Sol families and students when private physicians are not readily available because of scheduling overload or insurance is not accessible. SOS, as part of its



collaborative and contractual relationship with El Sol, will provide flu shots. Should the incidence of flu and or a spike in COVID-19 result in long waiting times for El Sol parents or children, El Sol will make best efforts to secure additional shots from other partners.

Mental Health

Self-Quarantine by families and students, economic concerns, as well as uncertainty concerning student education alternatives and fear of virus have increased the incidence of personal and family anxiety, tension, visible stress, even depression. Continued emotional issues will likely result from the hybrid approach related to scheduling and the difficulties some students will face adjusting to the mix of online and on-site learning. In a similar vein, hybrid approaches may increase anxieties concerning wage earner job opportunities. Which parent will take care of kids? Will there be adequate quality day care for children including children of single parents or children in caregiver households? El Sol has and will continue to retain onsite



and on-line therapeutic services provided by Western Youth Services. Possible case overload will be responded to by seeking additional partner resources.

Wellness Room

El Sol is in the process of developing a “Wellness Rooms”. One for staff and for students. A wellness room, is a room which serves as a safe haven for students and staff; It looks like a trendy hang-out center, but serves a higher purpose: individuals can go here when they feel stressed. The room features low lighting, comfortable seating options, and a myriad of stress-relieving games. People can use the puzzles, silly putty and noise cancelling headphones to help decrease stress. Mindfulness strategies such as breathing exercises and videos will be available to encourage meditation and help become more aware of one’s surroundings. Wellness room activities for students will be monitored by our emotional support staff.

Communication

El Sol is committed to build on its excellent collaborative relationships with its teachers, staff, parents or caregivers, and students and to strengthen its strategic COVID-19 collaborative relationships with the OC Health and Education Departments, the OC Department of Social Services as well as the SAUSD and other relevant local, state, and federal agencies. Transparency and integrity have and will continue to govern communications. The School has also made a commitment to initiate communication concerning status of COVID-19 and mitigation strategies with its contiguous community.

El Sol will balance its desire and legal responsibilities to be transparent concerning the virus with its desire and legal responsibilities to protect privacy.

El Sol initiatives will include:

- Make use of the Orange County Health Care Agency, CHOC, UCI consultative phone service to secure a response to issues and questions related to health and safety guidelines and procedures.
- Reaffirm and strengthen the links with OCHCA, particularly related to screening, testing, and contact tracing.
- Encourage parent, teachers, staff, and students to attend strategic zoom sessions to assure understanding of plan and key mitigation measures (social distancing, masks, washing hands etc.) as well as the value of the UCI Pilot Research Program (e.g., objectives, testing, contact tracing etc.) and fears concerning virus transmission resulting from onsite classes and events. El Sol will respond quickly through varied means including webinars, zoom conferencing, phone calls, and email exchanges to parents, teacher, student issues and questions.
- Initiate calls to parents to foster discussion concerning their observations of El Sol’s hybrid approach. Teachers and staff will attend on site and zoom discussions led by El Sol’s leadership concerning perceptions of the good and not so good and areas of opportunity to improve the hybrid model.

Brief surveys will be used every six months to secure the views of parents or caregivers concerning their child or children’ El Sol education and learning experiences. Survey results will be communicated to parents as to aggregate or summary.

Privacy

El Sol will use the above approaches to, generally, inform the El Sol community of the incidence of asymptomatic and symptomatic COVID-19 affecting El Sol parents, students, teachers, and staff. Data and analyses will only be provided in the aggregate and, except as required by law, will not identify specific affected parents, students, teachers, and staff. El Sol will make reasonable efforts to respond to media requests regarding COVID-19's impact on the school and the results of mitigation initiatives.

Protocols

Most of El Sol's guidelines as stated above provide specifics as to behavior of teachers, students, and staff, but some such as deep cleaning will require a specific protocol. Similarly, the procedures for screening, testing, contact tracing and self-quarantine involving multiple groups and individuals will be subject to a protocol prepared by El Sol to assure success.

APPENDIX I - COVID-19 FAQ

Questions and Answers

What determines whether schools are conducting in-person learning or distance learning?

Using health data, schools can be open for in-person instruction under orders of state and county health officials. Schools must follow the Blueprint for a Safer Economy to remain open or if they must close again.

What are the health and safety requirements for schools doing in-person learning?

- Everyone entering the school must do daily health checks.
- If someone experiences symptoms while at school, they will be sent home.
- Masks are required for all staff and students.
- The **school** will implement layers of prevention strategies, such as screening testing, improved ventilation, handwashing and covering coughs and sneezes, staying home when sick with symptoms of infectious illness including COVID-19, and regular cleaning to help reduce transmission risk

What is your Covid-19 protocol and notifying parents if a covid-19 case occurs at El Sol?

The following protocols will be followed: The school will follow state and local laws and regulations,

- El Sol administrators will collect information pertaining to the case: name, date of onset of symptoms or covid-19 test, name of students/staff that had physical close contact with the positive case.
- The school will report the case to Orange County Health Care Agency (OCHA) for next steps.
- We will notify any student, staff member and family of any potential exposure that was affected by the positive case.
- They will be advised to self-monitor for symptoms and follow local and state guidance if symptoms develop.

COMMON QUESTIONS & ANSWERS

FACE COVERINGS

Q. Why does the AAP still recommend universal masking in schools?

1. Newly discovered variants of COVID-19 are more easily spread among children, adolescents, and adults
2. To protect unvaccinated students, some who are not yet eligible for immunization, from COVID-19 and to reduce COVID transmission
3. Difficulty in monitoring or enforcing mask policies for those who are not vaccinated

Q. When does a child need to wear a mask at school?

- A. According to the CDC and CDPH, masks should be worn inside the classroom, but masks are not required outside, assuming 3-feet of separation is maintained.

Q. When do faculty and staff need to wear a mask at school?

- A. Teachers, regardless of immunization status, should remain masked when indoors at school, even when a student is not present.

PHYSICAL DISTANCE

Q. Do we still need to enforce physical distancing in schools?

- A. When masks are worn, there are no physical distancing requirements in the K-12 setting, which includes school transportation. During times when masks come off, such as during snack or lunch, physical separation of at least 3-feet is important to reduce transmission of COVID-19.

GENERAL HEALTH & SCREENING TESTING RECOMMENDATIONS (refer page 1)

Q. How does a health screener know whether a student with minor symptoms should be sent home?

- A. To dismiss COVID as a cause, we recommend that the following questions be considered:
 - Does the student have any previously reported health concerns that may have similar symptoms as Covid such as allergies, asthma, diabetes, or IBS?
 - Has the child had any exposure to other illnesses, i.e., the mother has a cold and has tested Negative for Covid?
 - If the student has a cough, is the cough continuous or rarely noted? If the cough is not explained by a known health issue such as asthma and does not last longer than 15 minutes, consider allowing the student to rest.
 - If the child's symptoms (i.e., runny nose or congestion), impact their ability to wear a mask, you may dismiss COVID as a cause, but still need to send a child home.

CASE REPORTING/CONTACT TRACING/INVESTIGATION

Q. Is the school responsible for case reporting and contact tracing?

- A. Schools are required to report COVID-19 cases to the local public health department in accordance with applicable privacy laws as soon as they are informed (Title 17, section 2500). Districts must continue to conduct contact tracing for close contacts (less than 3-feet of separation, unmasked, with contact duration > 15 minutes) that occur in indoor or outdoor environments.

QUARANTINE & ISOLATION RECOMMENDATIONS (see diagram on page 1)

HAND HYGIENE RECOMMENDATIONS:

Q. Is hand washing still a critical mitigation strategy?

1. Yes! Please teach and reinforce washing hands throughout the day, especially before and after eating, after using the toilet, and after handling garbage, or removing gloves.

CLEANING RECOMMENDATIONS

Q. How often should indoor surfaces be cleaned to keep students and faculty safe?

- A. Cleaning once a day is usually enough to sufficiently remove a potential virus that may be on surfaces. Surfaces that encounter food should be washed, rinsed, and sanitized before and after meals. Use recommended cleaning agents (see U.S. Environmental Protection Agency COVID-19 list).

FOOD SERVICE RECOMMENDATION

Q. If children are eating outside, COVID transmission is unlikely, right?

- A. Data suggests this eating during snack or lunch can be a time when COVID-19 is commonly transmitted in schools. Maximize distance as much as possible while eating, especially indoors.

VACCINATION VERIFICATION

Q. Should schools try to keep track of COVID-19 vaccinations?

- A. Schools should maintain documentation of a student's immunization records, including COVID-19, in compliance with all relevant state, local or territorial laws.

COVID-19 SAFETY PLANNING

Q. We want to keep our school safe. What works?

- A. Develop and share your safety plans, outline expectations, guidelines, and consequences.
- A. Clarify roles and responsibilities for plan implementation and establish an oversight committee. Clearly assign roles (health screening personnel, food service staff, COVID-19 liaison to report cases and support contact tracing, eating supervision to maintain physical distance, & staff to maintain cleaning supplies).

APENDIX II - COVID-19 STUDENT SCENARIO CHART

Student Symptom Decision Tree

Low-risk: general symptoms



Fever ($\geq 100.4^{\circ}\text{F}$)



Sore throat



Congestion/runny nose



Headache



Nausea/vomiting/diarrhea



Fatigue/muscle or body aches

High-risk: red flag symptoms



Cough



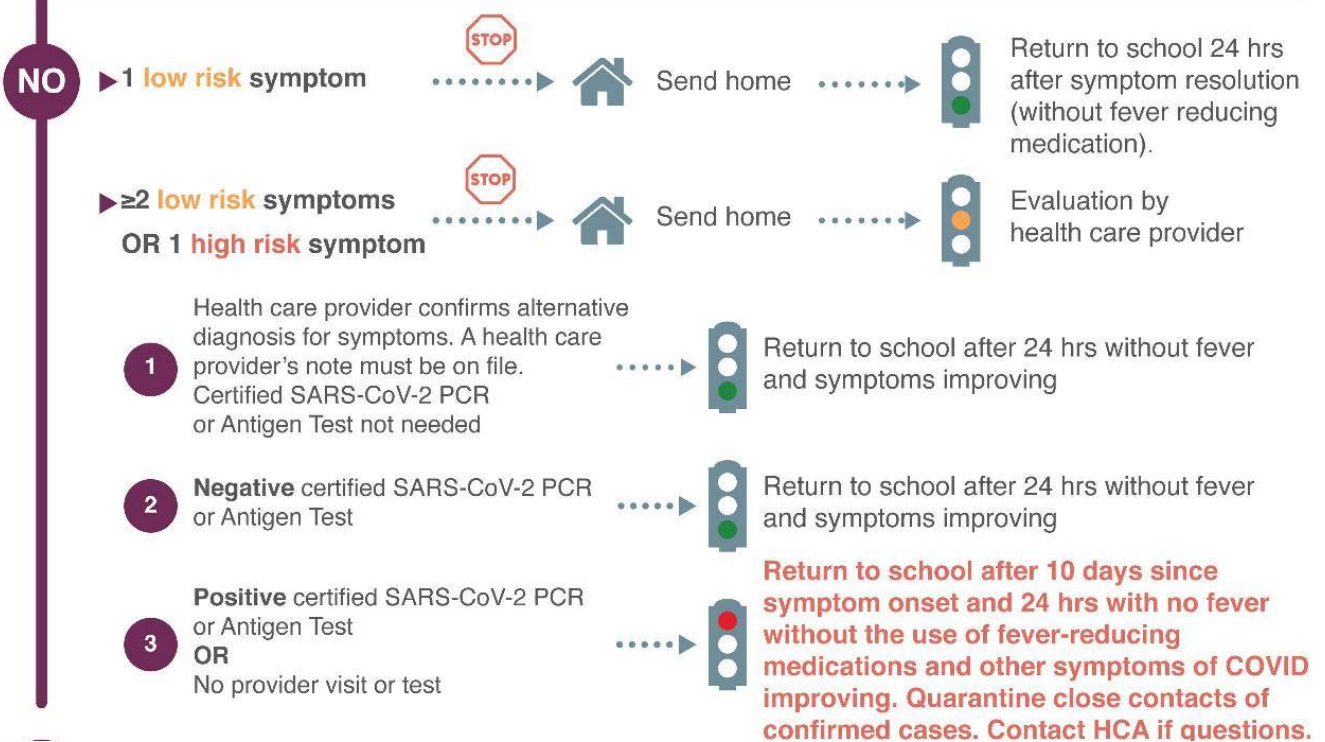
Difficulty breathing



Loss of taste/smell

Exposure to a COVID-19 positive person?

within 6 ft of a COVID + or clinically compatible person for >15 min in a 24 hr period, regardless of masking, and occurring in any location (indoor or outdoor)





(See student symptoms above)

YES

(within 6 feet for >15 min in a 24 hr period, regardless of masking)

► **Vaccinated or Documented COVID within 90-days**

- 1 Any symptoms► 
 - Isolation for 10 days regardless of test results
 - Get tested
 - Get care
- 2 No Symptoms► 
 - No quarantine
 - No required testing*
 - Continue to monitor for symptoms through day 14

**CDC recommends testing between day 3-5*

► **Unvaccinated**

- 1 Face covering (well-fitting and used correctly) on BOTH infected and exposed person
 - 1 No symptoms► 
 - Modified quarantine:
 - May attend school in person
 - Must wear a mask indoors AND outdoors
 - Tests 2 x per week for the first 10 days at least 3 days apart
 - No participation in extracurricular activities at school, including sports, and activities within the community setting for 14 days following last exposure. The exposed student may participate in all required instructional components of the school day, except activities where a mask cannot be worn.
 - * If no test, home from school for 10 days
 - 2 Symptoms develop► 
 - Isolation for 10 days regardless of test results
 - Get tested
 - Get care
- 2 No face covering on EITHER infected or exposed person
 - 1 Symptoms► 
 - Isolation for 10 days regardless of test results
 - Get tested
 - Get care
 - 2 No symptoms► 
 - Home quarantine:
 - May return to school after day 7 with a negative COVID test obtained after day 5 after last exposure
 - If no test, home from school for 10 days
 - Upon return to school, masking indoors and outdoors for 14 days
 - No participation in extracurricular activities at school, including sports, and activities within the community setting for 14 days following last exposure. The exposed student may participate in all required instructional components of the school day, except activities where a mask cannot be worn.



This care pathway was designed to assist school personnel and is not intended to replace the clinician's judgment or establish a protocol for all patients with a particular condition. Diagnosis and treatment should be under the close supervision of a qualified health care provider, including school nurses.

This guidance is based on current evidence and best data at the time of publication. Updates are provided to reflect changes in knowledge about the impact of the disease on children and adolescents (08-27-2021).

APPENDIX III - COVID-19 STAFF SCENARIO CHART

Staff Symptom Decision Tree

High-risk: red flag symptoms

- Fever ($\geq 100.4^{\circ}\text{F}$)**
- Difficulty breathing**
- Loss of taste/smell**
- New onset cough**
- Fatigue/muscle or body aches**

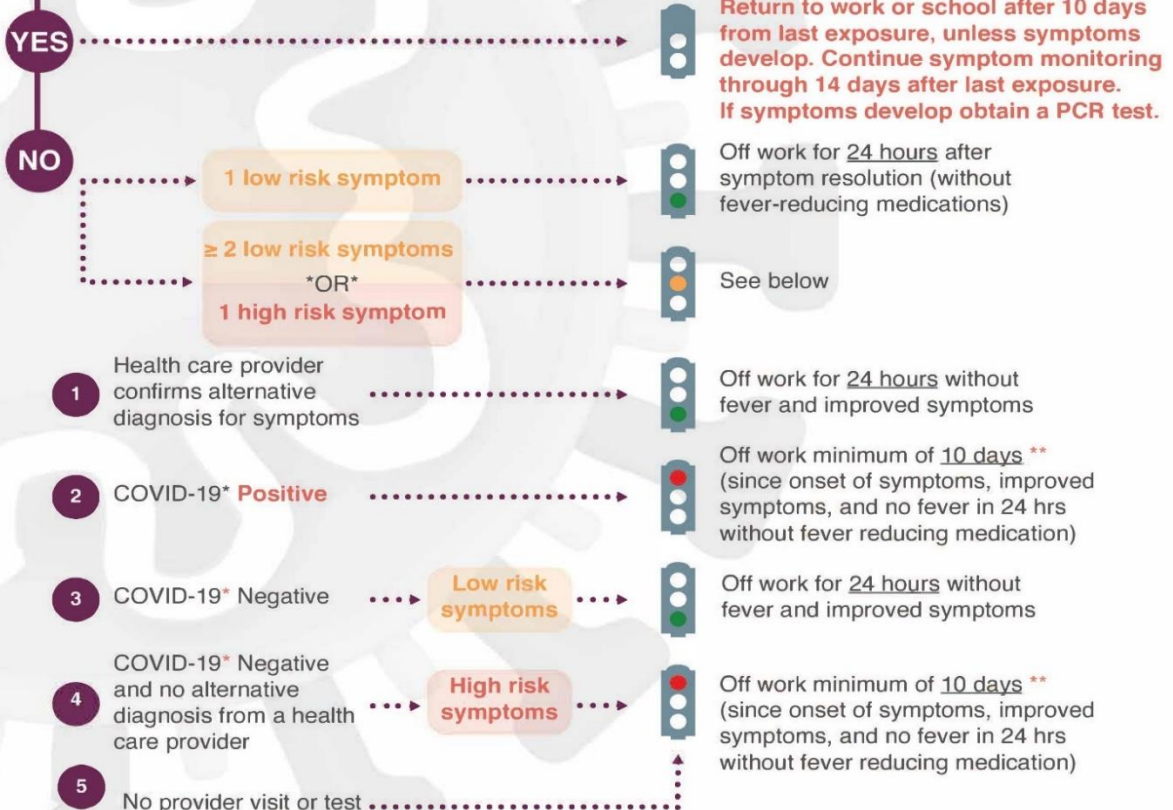
Low-risk: general symptoms

- Congestion/runny nose
- Nausea/vomiting/diarrhea
- Sore throat
- Headache

Risk levels vary for children
See Student Symptom Decision Tree

Close contact to COVID-19 positive person?

Close contact: Within 6 ft for > 15 minutes cumulative (regardless of mask)



*PCR or Rapid Antigen, not antibody

**May need staff to be off for up to 20 days.

Updated 12-10-20

Recommendations similar for students
See Student Symptom Decision Tree



APPENDIX IV – SYMPTOMS OF CORONAVIRUS

<https://www.cdc.gov/coronavirus/2019-ncov/symptoms-testing/symptoms.html>

Symptoms of Coronavirus (COVID-19)

Know the symptoms of COVID-19, which can include the following:



Symptoms can range from mild to severe illness, and appear 2–14 days after you are exposed to the virus that causes COVID-19.

Seek medical care immediately if someone has Emergency Warning Signs of COVID-19

- Trouble breathing
- Persistent pain or pressure in the chest
- New confusion
- Inability to wake or stay awake
- Pale, gray, or blue-colored skin, lips, or nail beds, depending on skin tone

This list is not all possible symptoms. Please call your healthcare provider for any other symptoms that are severe or concerning to you.



Centers for Disease
Control and Prevention
National Center for Emerging and
Zoonotic Infectious Diseases

cdc.gov/coronavirus

CS-312142.4

APPENDIX V - RESOURCES

- What Parents Should Know About the Updated COVID-19 School Guidance

<https://www.cdph.ca.gov/Programs/CID/DCDC/Pages/COVID-19/UpdatedCovid19SchoolGuidance.aspx>

- Safe Schools Parent Page

<https://schools.covid19.ca.gov/pages/parent-page>

- COVID-19 Public Health Guidance for K-12 Schools in California, 2021-22 School Year

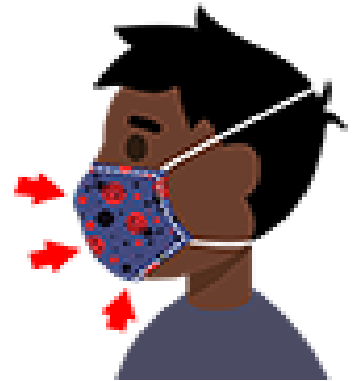
<https://www.cdph.ca.gov/Programs/CID/DCDC/Pages/COVID-19/K-12-Guidance-2021-22-School-Year.aspx>

APPENDIX VI - HOW TO SELECT A MASK



Find a mask that is made for children to help ensure proper fit.

Check to be sure the mask fits snugly over the nose and mouth and under the chin and that there are no gaps around the sides.



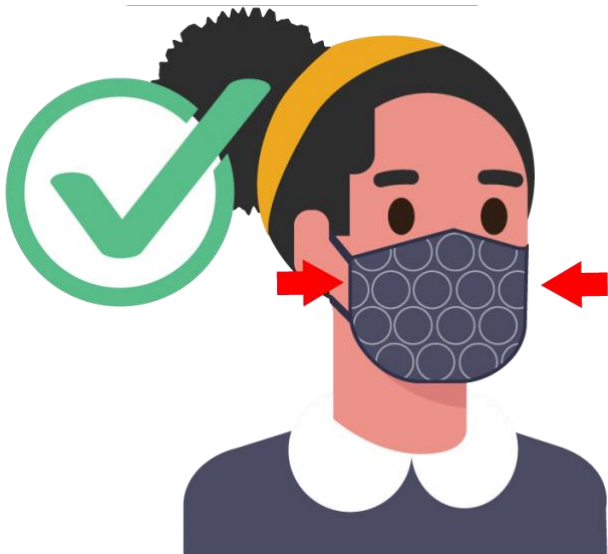
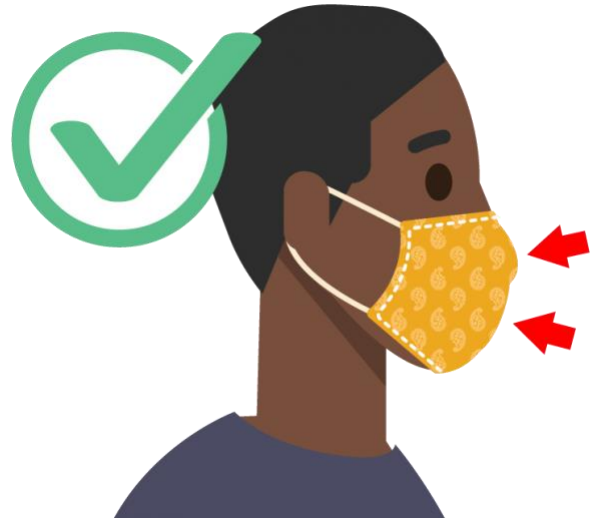
Do's and Don'ts

Do's



Have two or more layers of washable, breathable fabric

Completely cover your nose and mouth



Fit snugly against the sides of your face and don't have gaps

Have a nose wire to prevent air from leaking out of the top of the mask



Don'ts



Are made of fabric that makes it hard to breathe, for example, vinyl

Have exhalation valves or vents which allow virus particles to escape



Are prioritized for healthcare workers, including N95 respirators